

## Instructions for Winding the Spring Mechanism Using the Jig

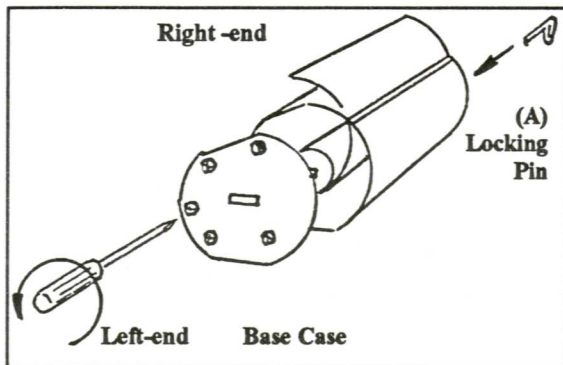


FIG. (I)

1. Position the rolling tube by inserting the Locking Pin at (A) into the round hole in the side plate (Right-end). Now the tube is locked.
2. Remove the 5 screws from the side plate at the other end, the side with the slot (Left-end). Remove the side plate.

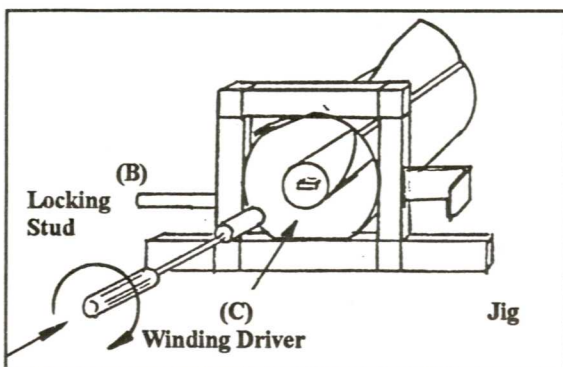


FIG. (II)

3. Let approx. 10 cm of the PVC sheet hang out from the Base Case. Place the Left-end into the Jig. Secure the position of Base Case at (B) using the Locking Stud.
4. Wind the rolling mechanism ~~32~~<sup>42</sup> turns in clockwise direction, using the Winding Driver at (C).

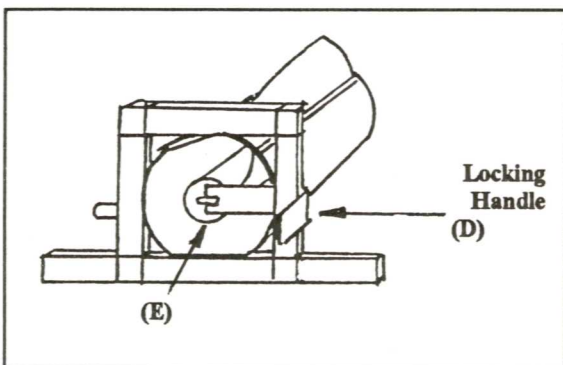


FIG. (III)

5. BEFORE removing the Winding Driver, push in gently the Locking Handle at (D) of the Jig to lock this position at (E), as shown in the diagram.

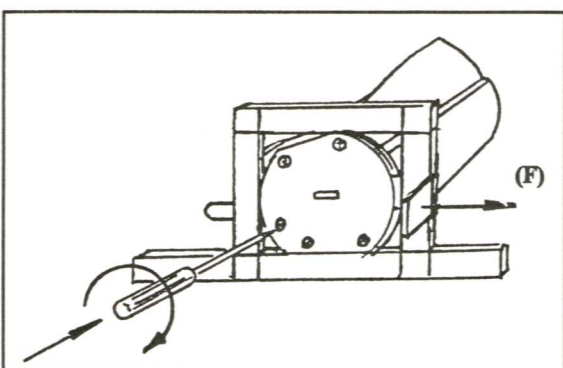


FIG. (IV)

6. BEFORE removing the Locking Handle, place the side plate over the Handle and keep the case steady by inserting 2 screws.
7. Remove the Locking Handle (F).
8. Replace all the screws into position and secure them firmly.